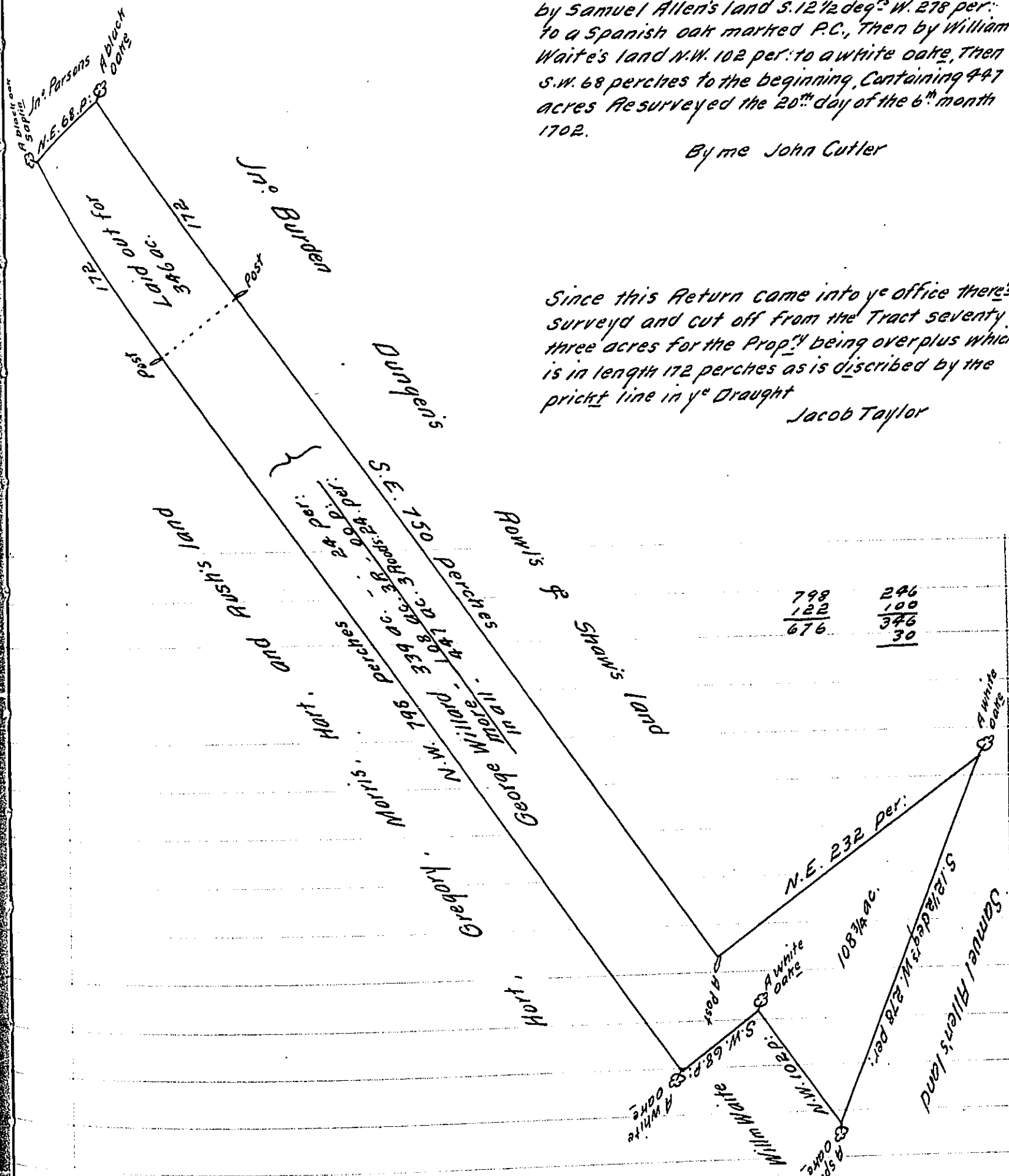


By virtue of a Warrant from the Proprietaries Commissioners to me directed bearing date the 11th day of the 6th month 1702 Resurveyed unto George Willard a Tract of Land near Southampton in the County of Bucks, Beginning at a corner marked white oak at William Waites Corner, Thence by Hort, Gregory, Morris, Hart, and Rush's land N.W. 798 per. to a Corner marked black oak sapling, Then by John Parsons N.E. 68 per. to a black oak in John Burden's line, Then by the 5th Burden, Dunger, Rowls, and John Shaw's land S.E. 750 perches to a Post, Then N.E. 232 per. to a white oak Then by Samuel Allen's land S. 12 1/2 deg^s W. 278 per. to a Spanish oak marked P.C., Then by William Waites land N.W. 102 per. to a white oak, Then S.W. 68 perches to the beginning, Containing 447 acres Resurveyed the 20th day of the 6th month 1702.

By me John Cutler

Since this Return came into ye office there's surveyd and cut off from the Tract seventy three acres for the Prop^y being overplus which is in length 172 perches as is describ'd by the prickt line in ye Draught

Jacob Taylor



IN TESTIMONY that the above is a copy of the original remaining on file in the Department of Internal Affairs of Pennsylvania, made conformably to an Act of Assembly approved the 16th day of February, 1833, I have hereunto set my Hand and caused the Seal of said Department to be affixed at Harrisburg, this twenty-fourth day of May 1909

Henry Howell
 Secretary of Internal Affairs.